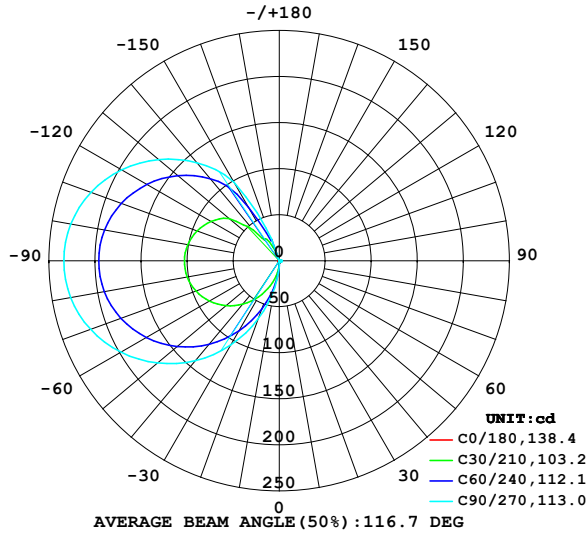


LUMINAIRE PHOTOMETRIC TEST REPORT

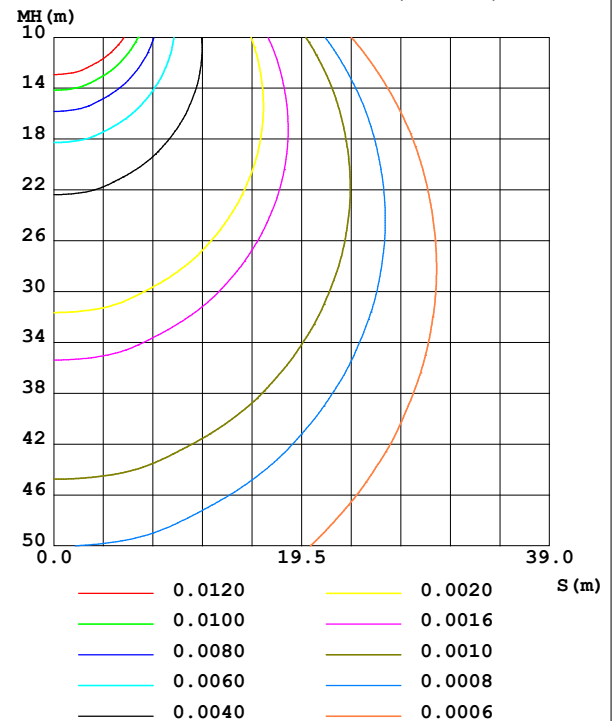
NAME: 99LPL094/WH	TYPE:	WEIGHT: 1
SPEC.:	DIM.: 300 x 110 x 25	SERIAL No.: 0
MFR.: Elmark Industries JSC	SUR.: rectangle	Shielding Angle:

DATA OF LAMP		PHOTOMETRIC DATA			
MODEL	99LPL094/WH	I _{max} (cd)	234.0	S/MH (C0/180)	1.35
NOMINAL POWER (W)	9.4	LOR (%)	107.3	S/MH (C90/270)	10.89
RATED VOLTAGE (V)	230	TOTAL FLUX (lm)	655.48	η UP, DN (C0-180)	0.5, 0.8
NOMINAL FLUX (lm)	611	CIE CLASS	DIFFUSE	η UP, DN (C180-360)	51.5, 54.5
LAMPS INSIDE	1	η up (%)	52.0	CIBSE SHR NOM	0.00
TEST VOLTAGE (V)	230	η down (%)	55.3	CIBSE SHR MAX	0.00

LUMINOUS INTENSITY DISTRIBUTION DIAGRAM



C0 PLANE ISOLUX DIAGRAM (UNIT: lx)



C Range: 0 - 360DEG
 C Interval: 10.0DEG
 Test Speed: HIGH
 Temperature: 25.3°C
 Operators:
 Test Date: 13 December 2022

γ Range: 0 - 160DEG
 γ Interval: 2.5DEG
 Test System: EVERFINE GO-2000A_V1 SYSTEM V2.00.456
 Humidity: 65.0%
 Test Distance: 6.265m [K=1.0000]
 Remarks:

ZONAL FLUX DIAGRAM

ZONAL FLUX DIAGRAM:

γ	C0	C45	C90	C135	C180	C225	C270	C315	γ	Φ zone	Φ total	%lum,lamp
10	1.986	1.787	1.643	1.789	1.983	19.59	29.73	19.47	0- 10	0.6468	0.6468	0.10,0.11
20	1.899	1.285	0.9390	1.309	1.912	43.27	67.07	42.57	10- 20	4.442	5.089	0.78,0.83
30	1.777	0.8608	1.260	0.9012	1.809	68.62	105.8	67.27	20- 30	12.27	17.36	2.65,2.84
40	1.624	1.114	1.777	1.169	1.679	92.77	141.7	90.79	30- 40	23.54	40.90	6.24,6.69
50	1.426	1.539	1.997	1.638	1.510	114.0	172.8	111.5	40- 50	36.83	77.73	11.9,12.7
60	1.184	1.688	2.155	1.789	1.303	131.3	198.6	128.3	50- 60	50.36	128.1	19.5,21
70	0.9007	1.621	2.215	1.727	1.053	144.1	218.0	140.7	60- 70	62.37	190.5	29.1,31.2
80	0.6178	1.507	2.202	1.605	0.7939	151.6	230.1	148.0	70- 80	71.29	261.8	39.9,42.8
90	0.3784	1.378	2.138	1.476	0.5196	154.0	234.0	150.3	80- 90	75.92	337.7	51.5,55.3
100	0.3510	1.324	2.072	1.431	0.3863	151.2	229.9	147.5	90-100	75.76	413.4	63.1,67.7
110	0.3510	1.224	1.914	1.340	0.3401	143.0	217.6	139.4	100-110	70.78	484.2	73.9,79.2
120	0.3510	1.084	1.704	1.217	0.3237	129.6	197.7	126.4	110-120	61.40	545.6	83.2,89.3
130	0.3347	0.9188	1.445	1.061	0.3101	111.6	171.2	108.9	120-130	48.61	594.2	90.7,97.3
140	0.3156	0.7520	1.149	0.8939	0.2883	86.44	138.9	84.79	130-140	34.32	628.5	95.9,103
150	0.2911	0.5935	0.8560	0.7407	0.2775	37.52	98.42	33.53	140-150	19.89	648.4	98.9,106
160	0.2721	0.4472	0.6381	0.6010	0.2775	17.56	26.10	14.84	150-160	6.709	655.1	99.9,107
170	0	0	0	0	0	0	0	0	160-170	0.3463	655.5	100,107
180	0	0	0	0	0	0	0	0	170-180	0	655.5	100,107
DEG	LUMINOUS INTENSITY:cd									UNIT:lm		

Conical surface Flux(90deg): 57.597 lm

%lum = 8.8%

%lamp = 9.4%

Conical surface Flux(130deg): 157.94 lm

%lum = 24.1%

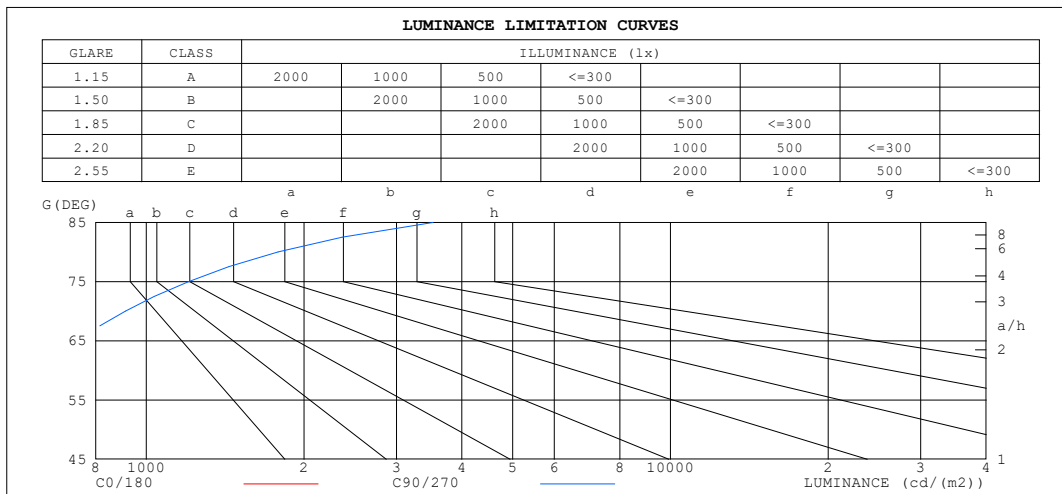
%lamp = 25.8%

C Range: 0 - 360DEG
C Interval: 10.0DEG
Test Speed: HIGH
Temperature:25.3°C
Operators:
Test Date:13 December 2022

γ Range: 0 - 160DEG
 γ Interval: 2.5DEG
Test System:EVERFINE GO-2000A_V1 SYSTEM V2.00.456
Humidity:65.0%
Test Distance:6.265m [K=1.0000]
Remarks:

LUMINANCE LIMITATION CURVES

NAME: 99LPL094/WH	TYPE:	WEIGHT: 1
SPEC.:	DIM.: 300 x 110 x 25	SERIAL No.: 0
MFR.: Elmark Industries JSC	SUR.: rectangle	Shielding Angle:



LUMINANCE cd/(m2)		
G (DEG)	C0/180	C90/270
85	799	3520
80	509	1785
75	421	1203
70	376	912
65	353	735
60	338	607
55	327	511
50	317	437
45	310	378

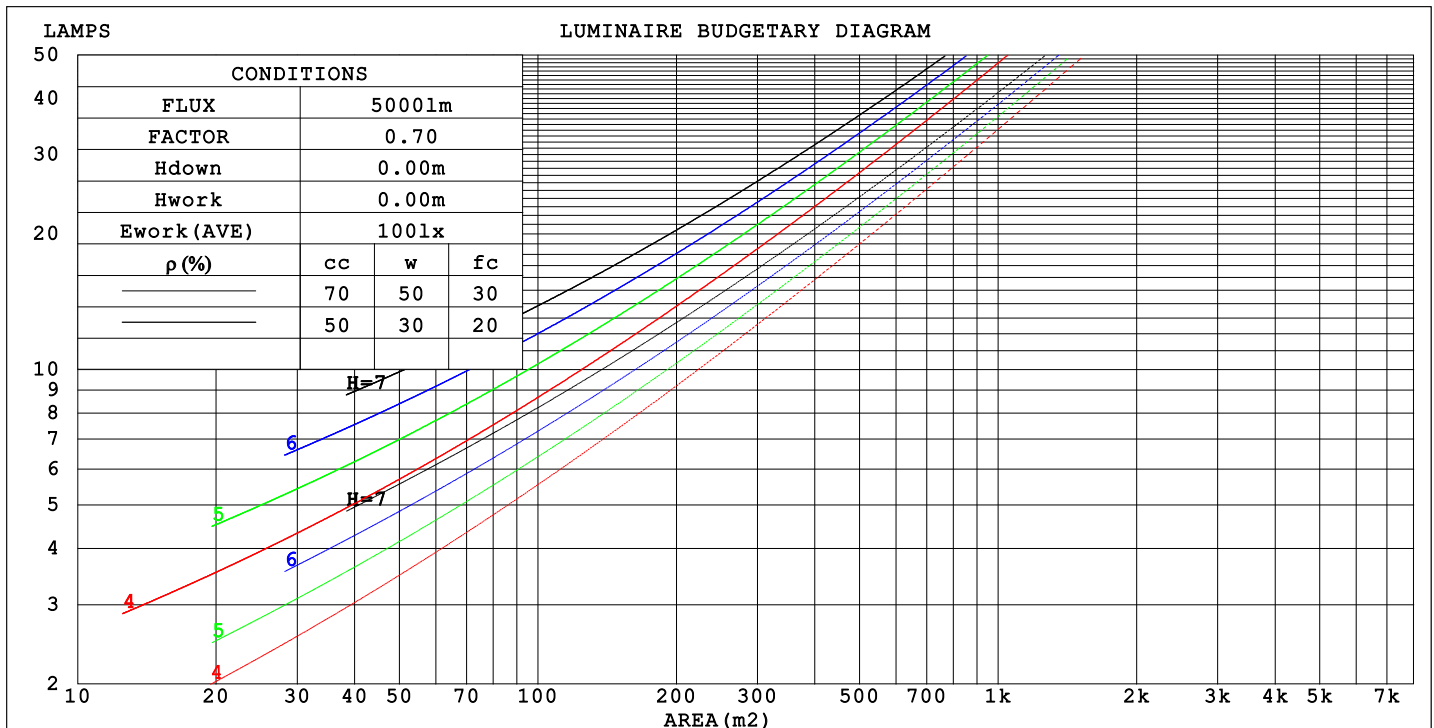
C Range: 0 - 360DEG
C Interval: 10.0DEG
Test Speed: HIGH
Temperature: 25.3°C
Operators:
Test Date: 13 December 2022

γ Range: 0 - 160DEG
γ Interval: 2.5DEG
Test System: EVERFINE GO-2000A_V1 SYSTEM V2.00.456
Humidity: 65.0%
Test Distance: 6.265m [K=1.0000]
Remarks:

CU AND LUMINAIRE BUDGETARY ESTIMATE DIAGRAM

NAME: 99LPL094/WH	TYPE:	WEIGHT: 1
SPEC.:	DIM.: 300 x 110 x 25	SERIAL No.: 0
MFR.: Elmark Industries JSC	SUR.: rectangle	Shielding Angle:

pcc	80%			70%			50%			30%			10%			0
pw	50%	30%	10%	50%	30%	10%	50%	30%	10%	50%	30%	10%	50%	30%	10%	0
pfc	20%			20%			20%			20%			20%			0
RCR	RCR:Room Cavity Ratio															



C Range: 0 - 360DEG
C Interval: 10.0DEG
Test Speed: HIGH
Temperature:25.3°C
Operators:
Test Date:13 December 2022

γ Range: 0 - 160DEG
γ Interval: 2.5DEG
Test System:EVERFINE GO-2000A_V1 SYSTEM V2.00.456
Humidity:65.0%
Test Distance:6.265m [K=1.0000]
Remarks:

WEC AND CCEC

NAME: 99LPL094/WH	TYPE:	WEIGHT: 1
SPEC.:	DIM.: 300 x 110 x 25	SERIAL No.: 0
MFR.: Elmark Industries JSC	SUR.: rectangle	Shielding Angle:

pcc	80%			70%			50%			30%			10%			0
pw	50%	30%	10%	50%	30%	10%	50%	30%	10%	50%	30%	10%	50%	30%	10%	0
pfc	20%			20%			20%			20%			20%			0
RCR	RCR:Room Cavity Ratio						Wall Exitance Coefficients(WEC)									
0.0																
1.0	.476	.271	.086	.452	.258	.082	.408	.234	.075	.367	.212	.068	.329	.191	.062	
2.0	.391	.214	.066	.369	.203	.063	.329	.183	.057	.291	.163	.051	.257	.145	.046	
3.0	.338	.180	.054	.318	.170	.051	.281	.152	.046	.246	.135	.041	.214	.119	.037	
4.0	.298	.155	.046	.280	.147	.043	.246	.131	.039	.215	.115	.035	.185	.101	.031	
5.0	.268	.136	.040	.251	.129	.038	.220	.114	.034	.191	.101	.030	.163	.087	.026	
6.0	.243	.122	.035	.228	.115	.033	.199	.102	.030	.172	.089	.026	.147	.077	.023	
7.0	.222	.110	.031	.208	.104	.030	.182	.092	.026	.157	.080	.023	.133	.069	.020	
8.0	.205	.100	.028	.192	.094	.027	.167	.083	.024	.144	.073	.021	.122	.063	.018	
9.0	.190	.092	.026	.178	.087	.024	.155	.077	.022	.133	.067	.019	.113	.057	.017	
10.0	.177	.085	.024	.166	.080	.022	.144	.071	.020	.124	.062	.017	.105	.053	.015	

pcc	80%			70%			50%			30%			10%			0
pw	50%	30%	10%	50%	30%	10%	50%	30%	10%	50%	30%	10%	50%	30%	10%	0
pfc	20%			20%			20%			20%			20%			0
RCR	RCR:Room Cavity Ratio						Ceiling Cavity Exitance Coefficients (CCEC)									
0.0	.601	.601	.601	.513	.513	.513	.350	.350	.350	.201	.201	.201	.064	.064	.064	
1.0	.603	.566	.532	.516	.486	.458	.353	.334	.317	.203	.193	.184	.065	.062	.060	
2.0	.597	.543	.498	.512	.468	.430	.351	.324	.300	.202	.188	.176	.065	.061	.057	
3.0	.590	.527	.477	.506	.455	.414	.347	.316	.290	.201	.185	.171	.064	.060	.056	
4.0	.582	.515	.464	.499	.445	.403	.343	.310	.284	.199	.182	.168	.064	.059	.055	
5.0	.574	.506	.455	.493	.437	.396	.340	.306	.280	.197	.179	.166	.063	.059	.055	
6.0	.566	.498	.449	.487	.431	.391	.336	.302	.277	.195	.178	.164	.063	.058	.054	
7.0	.559	.491	.444	.480	.426	.387	.332	.299	.274	.193	.176	.163	.062	.058	.054	
8.0	.551	.486	.441	.475	.421	.384	.328	.296	.273	.191	.175	.162	.062	.057	.054	
9.0	.545	.481	.438	.469	.417	.382	.325	.293	.271	.189	.173	.162	.061	.057	.054	
10.0	.538	.477	.436	.464	.414	.380	.322	.291	.270	.188	.172	.161	.061	.057	.053	

C Range: 0 - 360DEG
C Interval: 10.0DEG
Test Speed: HIGH
Temperature:25.3°C
Operators:
Test Date:13 December 2022

γ Range: 0 - 160DEG
γ Interval: 2.5DEG
Test System:EVERFINE GO-2000A_V1 SYSTEM V2.00.456
Humidity:65.0%
Test Distance:6.265m [K=1.0000]
Remarks:

UGR(Unified Glare Rating) Table

NAME: 99LPL094/WH					TYPE:			WEIGHT: 1			
SPEC.:					DIM.: 300 x 110 x 25			SERIAL No.: 0			
MFR.: Elmark Industries JSC					SUR.: rectangle			Shielding Angle:			
ceiling/cavity	0.7	0.7	0.5	0.5	0.3	0.7	0.7	0.5	0.5	0.3	
walls	0.5	0.3	0.5	0.3	0.3	0.5	0.3	0.5	0.3	0.3	
working plane	0.2	0.2	0.2	0.2	0.2	0.2	0.2	0.2	0.2	0.2	
Room dimensions		Viewed crosswise					Viewed endwise				
x = 2H	y = 2H	-6.8	-5.7	-6.0	-4.8	-3.7	-2.6	-1.5	-1.8	-0.6	0.5
	3H	-4.4	-3.4	-3.5	-2.4	-1.3	0.9	1.9	1.7	2.8	4.0
	4H	-3.0	-2.0	-2.1	-1.1	0.1	2.8	3.8	3.7	4.7	5.9
	6H	-1.7	-0.7	-0.8	0.2	1.4	4.9	5.8	5.8	6.8	8.0
	8H	-1.0	-0.1	-0.1	0.8	2.0	6.1	7.0	7.0	7.9	9.1
	12H	-0.4	0.5	0.5	1.4	2.7	7.4	8.2	8.3	9.2	10.4
4H	2H	-4.5	-3.5	-3.6	-2.6	-1.4	-2.0	-1.0	-1.1	-0.1	1.1
	3H	-2.0	-1.1	-1.1	-0.2	1.0	1.7	2.5	2.6	3.5	4.7
	4H	-0.6	0.2	0.3	1.1	2.4	3.8	4.6	4.7	5.5	6.8
	6H	0.7	1.4	1.6	2.4	3.6	6.1	6.8	7.0	7.8	9.1
	8H	1.3	1.9	2.2	2.9	4.2	7.4	8.0	8.3	9.0	10.3
	12H	1.9	2.5	2.9	3.5	4.8	8.8	9.5	9.8	10.5	11.8
8H	4H	0.9	1.6	1.9	2.6	3.8	4.1	4.8	5.1	5.8	7.1
	6H	2.5	3.1	3.5	4.1	5.4	6.8	7.3	7.7	8.3	9.7
	8H	3.3	3.8	4.3	4.8	6.1	8.3	8.8	9.3	9.8	11.1
	12H	4.1	4.5	5.1	5.6	6.9	10.0	10.5	11.0	11.5	12.8
12H	4H	1.4	2.1	2.4	3.0	4.3	4.2	4.8	5.1	5.8	7.1
	6H	3.2	3.8	4.2	4.8	6.1	6.9	7.4	7.9	8.4	9.7
	8H	4.2	4.7	5.2	5.7	7.0	8.5	9.0	9.5	10.0	11.3
Variations with the observer position at spacings(CIE Pub.117):											
S = 1.0H		+ 0.1 / - 0.1					+ 0.1 / - 0.1				
1.5H		+ 0.2 / - 0.1					+ 0.2 / - 0.3				
2.0H		+ 0.4 / - 0.3					+ 0.3 / - 0.4				

CIE Pub.117, 611.0 lm Total Lamp Luminous Flux Correct (8log(F/F0) = -1.7)
Area: 0.007 m2

C Range: 0 - 360DEG
C Interval: 10.0DEG
Test Speed: HIGH
Temperature:25.3°C
Operators:
Test Date:13 December 2022

γ Range: 0 - 160DEG
γ Interval: 2.5DEG
Test System:EVERFINE GO-2000A_V1 SYSTEM V2.00.456
Humidity:65.0%
Test Distance:6.265m [K=1.0000]
Remarks:

UTILIZATION FACTORS TABLE

NAME: 99LPL094/WH	TYPE:	WEIGHT: 1
SPEC.:	DIM.: 300 x 110 x 25	SERIAL No.: 0
MFR.: Elmark Industries JSC	SUR.: rectangle	Shielding Angle:

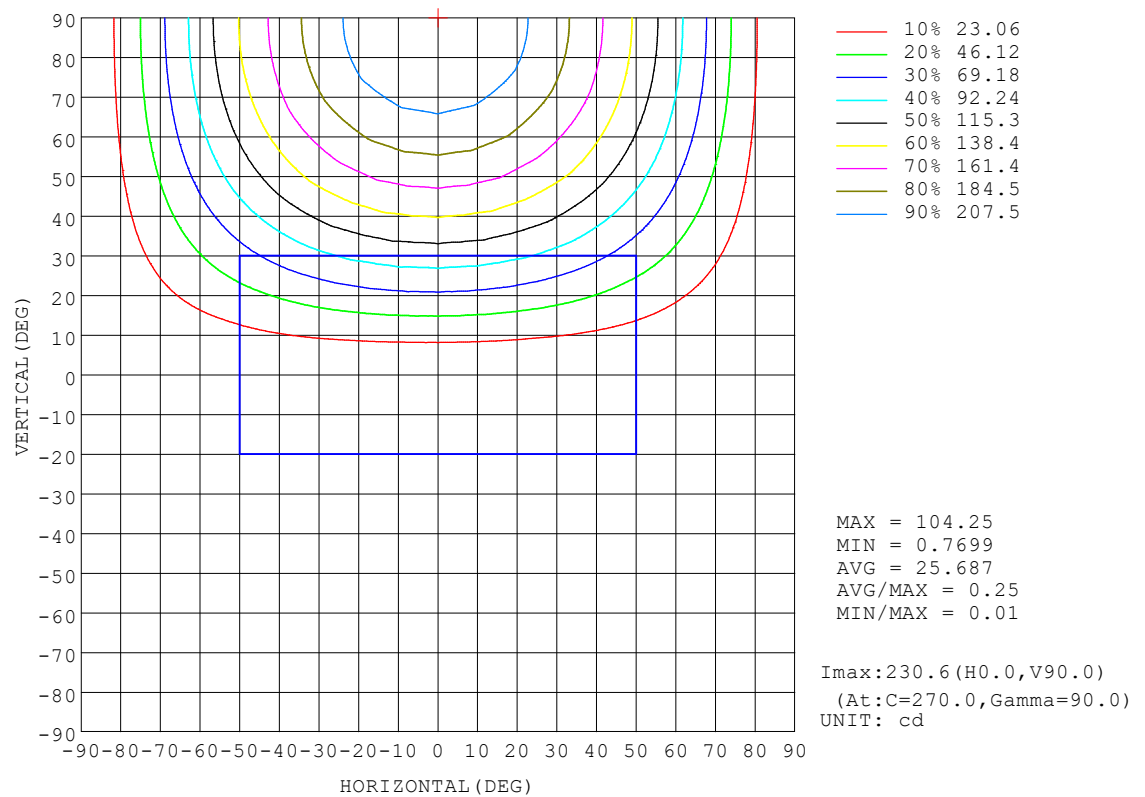
REFLECTANCE										
Ceiling	0.8	0.8	0.8	0.7	0.7	0.7	0.5	0.5	0.5	0
Walls	0.7	0.5	0.3	0.7	0.5	0.3	0.7	0.5	0.3	0
Working plane	0.2	0.2	0.2	0.2	0.2	0.2	0.2	0.2	0.2	0
ROOM INDEX	UTILIZATION FACTORS (PERCENT) $k(RI) \times RCR = 5$									
$k = 0.60$	36	22	14	34	21	13	31	19	12	5
0.80	45	30	20	42	28	19	37	25	17	7
1.00	53	37	26	49	35	25	43	33	22	10
1.25	60	44	33	56	41	31	48	36	28	13
1.50	66	50	39	61	47	37	52	41	32	16
2.00	74	60	49	69	56	46	59	48	40	21
2.50	80	66	56	74	62	52	63	53	45	24
3.00	85	72	62	78	67	58	66	57	50	27
4.00	91	80	70	84	74	66	71	63	56	31
5.00	95	85	76	87	79	71	74	67	61	34
ROOM INDEX	UF(total)									Direct
According to DIN EN 13032-2 2004			Suspended					SHRNOM = 1.25		

C Range: 0 - 360DEG
C Interval: 10.0DEG
Test Speed: HIGH
Temperature: 25.3°C
Operators:
Test Date: 13 December 2022

γ Range: 0 - 160DEG
γ Interval: 2.5DEG
Test System: EVERFINE GO-2000A_V1 SYSTEM V2.00.456
Humidity: 65.0%
Test Distance: 6.265m [K=1.0000]
Remarks:

ISOCANDELA DIAGRAM

NAME: 99LPL094/WH	TYPE:	WEIGHT: 1
SPEC.:	DIM.: 300 x 110 x 25	SERIAL No.: 0
MFR.: Elmark Industries JSC	SUR.: rectangle	Shielding Angle:

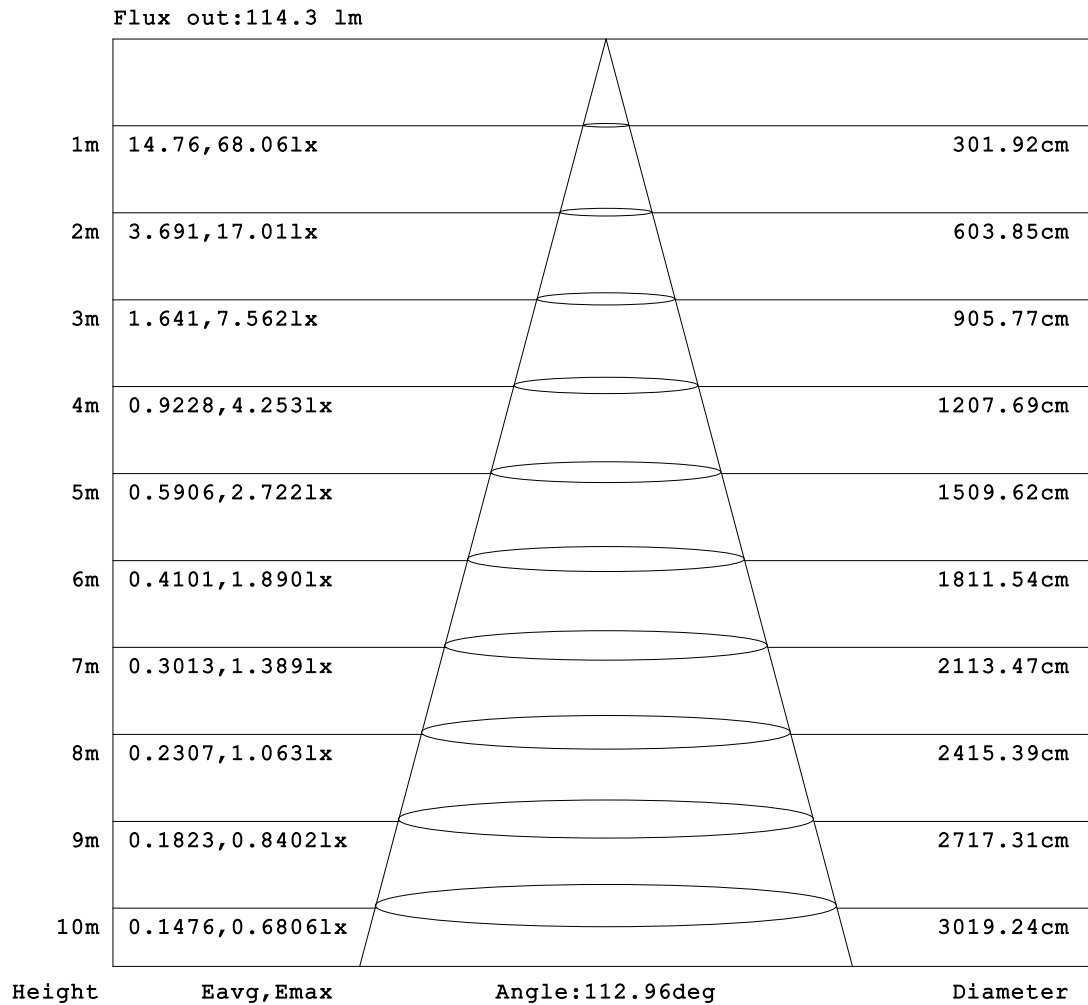


C Range: 0 - 360DEG
C Interval: 10.0DEG
Test Speed: HIGH
Temperature: 25.3°C
Operators:
Test Date: 13 December 2022

γ Range: 0 - 160DEG
γ Interval: 2.5DEG
Test System: EVERFINE GO-2000A_V1 SYSTEM V2.00.456
Humidity: 65.0%
Test Distance: 6.265m [K=1.0000]
Remarks:

AAI Figure

NAME: 99LPL094/WH	TYPE:	WEIGHT: 1
SPEC.:	DIM.: 300 x 110 x 25	SERIAL No.: 0
MFR.: Elmark Industries JSC	SUR.: rectangle	Shielding Angle:



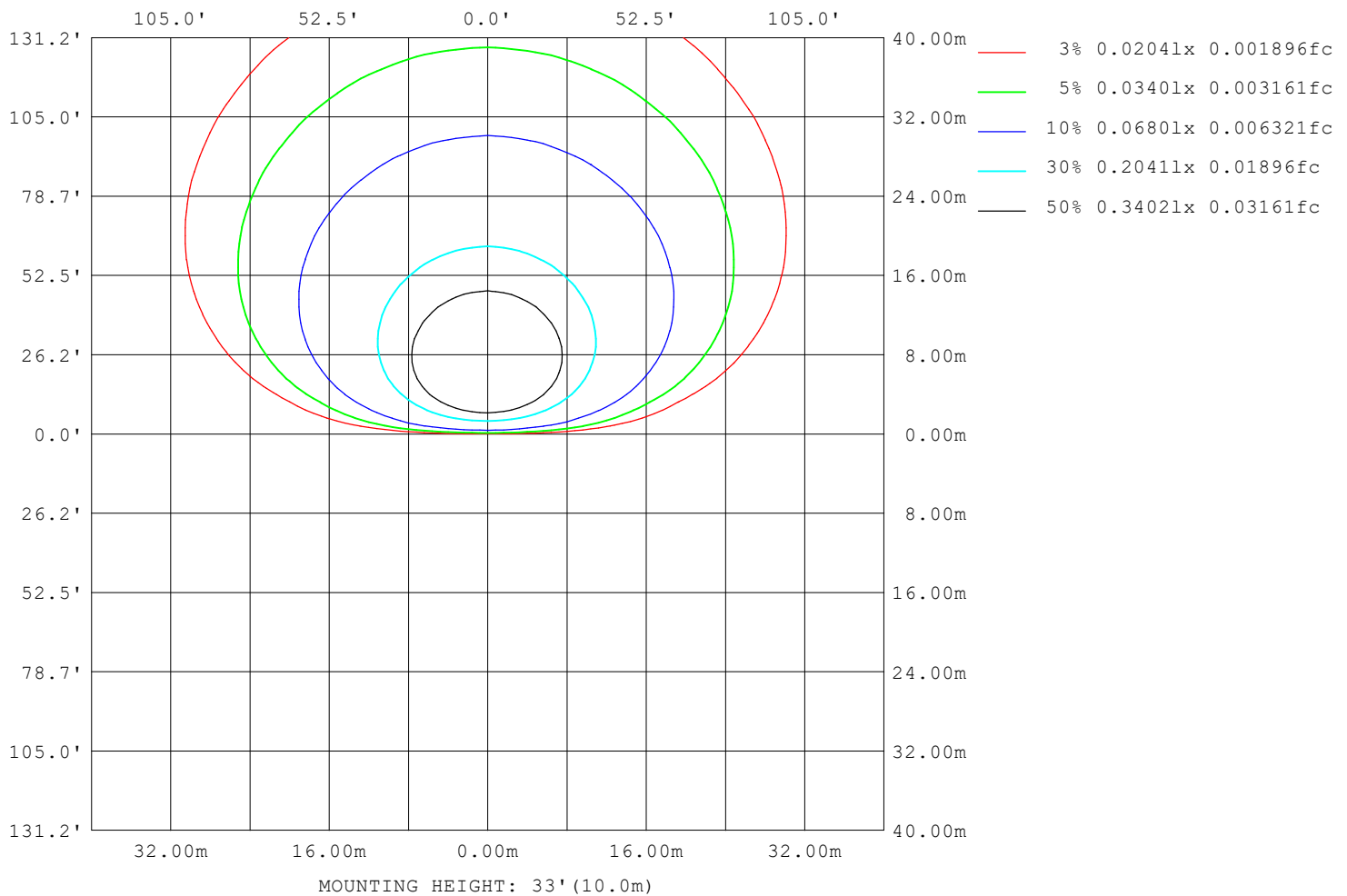
Note:The Curves indicate the illuminated area and the average illumination when the luminaire is at different distance.

C Range: 0 - 360DEG
 C Interval: 10.0DEG
 Test Speed: HIGH
 Temperature:25.3°C
 Operators:
 Test Date:13 December 2022

γ Range: 0 - 160DEG
 γ Interval: 2.5DEG
 Test System:EVERFINE GO-2000A_V1 SYSTEM V2.00.456
 Humidity:65.0%
 Test Distance:6.265m [K=1.0000]
 Remarks:

ISOLUX DIAGRAM

NAME: 99LPL094/WH	TYPE:	WEIGHT: 1
SPEC.:	DIM.: 300 x 110 x 25	SERIAL No.: 0
MFR.: Elmark Industries JSC	SUR.: rectangle	Shielding Angle:



C Range: 0 - 360DEG
C Interval: 10.0DEG
Test Speed: HIGH
Temperature: 25.3°C
Operators:
Test Date: 13 December 2022

γ Range: 0 - 160DEG
γ Interval: 2.5DEG
Test System: EVERFINE GO-2000A_V1 SYSTEM V2.00.456
Humidity: 65.0%
Test Distance: 6.265m [K=1.0000]
Remarks:

LED Avg.L Report

NAME: 99LPL094/WH	TYPE:	WEIGHT: 1
SPEC.:	DIM.: 300 x 110 x 25	SERIAL No.: 0
MFR.: Elmark Industries JSC	SUR.: rectangle	Shielding Angle:

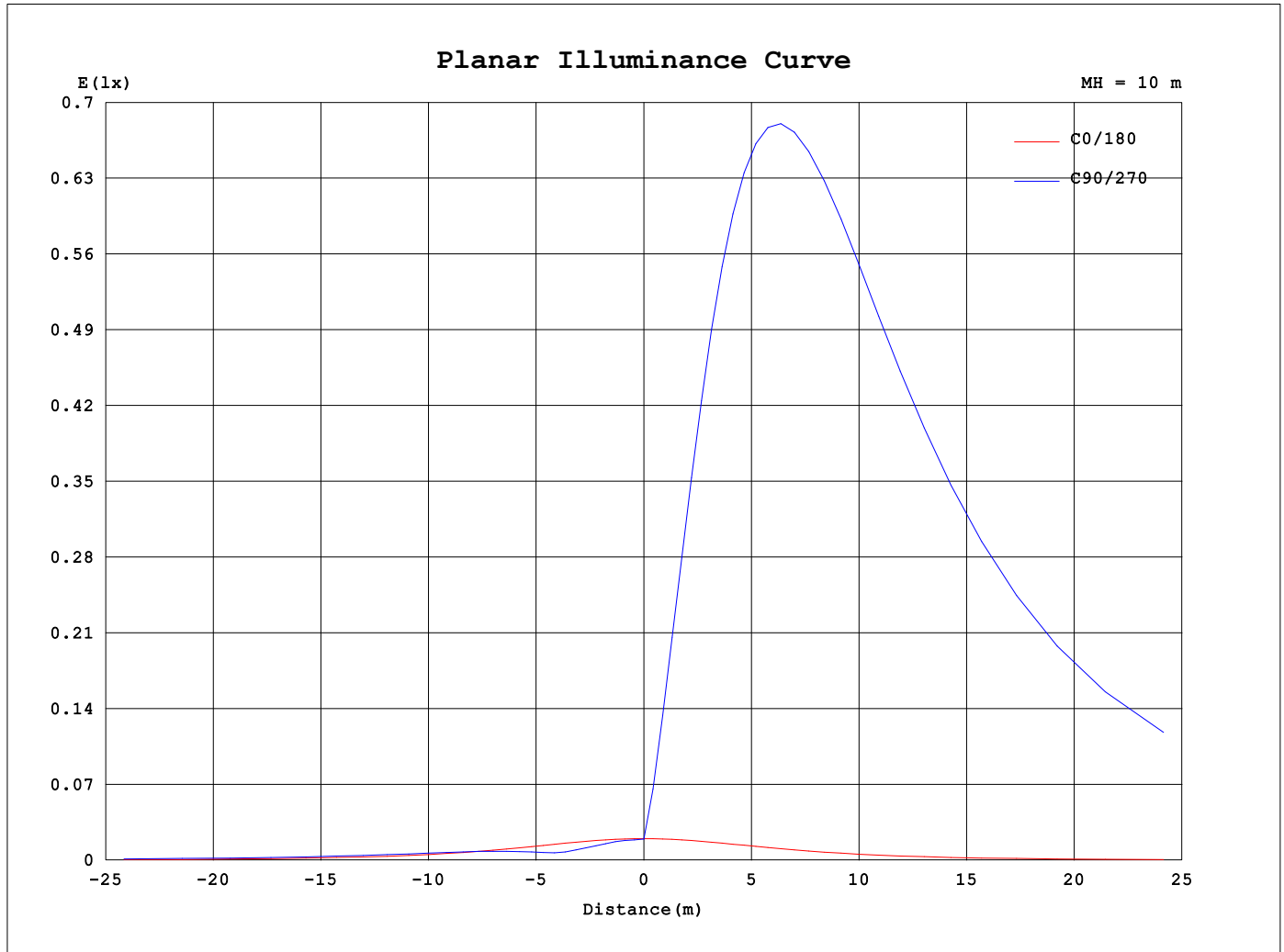
AvgL	cd/m2
L_0~180 (65) av	375
L_0~180 (75) av	465
L_0~180 (85) av	936
L_90~270 (65) av	35729
L_90~270 (75) av	62719
L_90~270 (85) av	192823
L_45 (65) av	23486
L_45 (75) av	41115
L_45 (85) av	125979

Standard: GB/T 29293-2012

C Range: 0 - 360DEG
C Interval: 10.0DEG
Test Speed: HIGH
Temperature:25.3°C
Operators:
Test Date:13 December 2022

γ Range: 0 - 160DEG
γ Interval: 2.5DEG
Test System:EVERFINE GO-2000A_V1 SYSTEM V2.00.456
Humidity:65.0%
Test Distance:6.265m [K=1.0000]
Remarks:

Planar Illuminance Curve



C Range: 0 - 360DEG
 C Interval: 10.0DEG
 Test Speed: HIGH
 Temperature: 25.3°C
 Operators:
 Test Date: 13 December 2022

γ Range: 0 - 160DEG
 γ Interval: 2.5DEG
 Test System: EVERFINE GO-2000A_V1 SYSTEM V2.00.456
 Humidity: 65.0%
 Test Distance: 6.265m [K=1.0000]
 Remarks:

LUMINOUS DISTRIBUTION INTENSITY DATA

NAME: 99LPL094/WH	TYPE:	WEIGHT: 1
SPEC.:	DIM.: 300 x 110 x 25	SERIAL No.: 0
MFR.: Elmark Industries JSC	SUR.: rectangle	Shielding Angle:

Table--1

UNIT: cd

C (DEG) γ (DEG)	0	10	20	30	40	50	60	70	80	90	100	110	120	130	140	150	160	170	180
0	2.00	2.00	2.00	2.00	2.00	2.00	2.00	2.00	2.00	2.00	2.00	2.00	2.00	2.00	2.00	2.00	2.00	2.00	2.00
5	2.00	1.96	1.96	1.94	1.93	1.91	1.91	1.89	1.89	1.87	1.88	1.88	1.90	1.90	1.93	1.93	1.95	1.94	2.00
10	1.99	1.93	1.91	1.86	1.81	1.76	1.72	1.67	1.65	1.64	1.66	1.68	1.72	1.76	1.82	1.86	1.90	1.92	1.98
15	1.94	1.88	1.82	1.72	1.62	1.51	1.43	1.35	1.31	1.29	1.32	1.35	1.44	1.53	1.64	1.73	1.83	1.88	1.95
20	1.90	1.82	1.71	1.54	1.37	1.20	1.09	0.98	0.96	0.94	0.98	1.00	1.11	1.22	1.40	1.56	1.73	1.83	1.91
25	1.84	1.74	1.57	1.31	1.09	0.91	0.86	0.90	0.92	0.98	0.94	0.92	0.89	0.94	1.13	1.35	1.60	1.76	1.86
30	1.78	1.64	1.39	1.07	0.86	0.87	0.98	1.14	1.19	1.26	1.20	1.16	1.01	0.90	0.91	1.11	1.44	1.67	1.81
35	1.70	1.53	1.20	0.85	0.81	1.05	1.19	1.38	1.45	1.54	1.47	1.41	1.23	1.09	0.85	0.90	1.25	1.56	1.75
40	1.62	1.39	1.00	0.78	0.98	1.25	1.41	1.61	1.67	1.78	1.70	1.65	1.47	1.31	1.03	0.81	1.05	1.44	1.68
45	1.53	1.24	0.81	0.89	1.16	1.48	1.65	1.80	1.81	1.90	1.86	1.87	1.72	1.56	1.23	0.94	0.87	1.30	1.60
50	1.43	1.07	0.70	1.04	1.37	1.71	1.79	1.90	1.91	2.00	1.95	1.96	1.88	1.81	1.47	1.11	0.75	1.13	1.51
55	1.31	0.88	0.75	1.23	1.59	1.76	1.83	1.97	1.99	2.08	2.03	2.03	1.93	1.86	1.69	1.31	0.80	0.96	1.41
60	1.18	0.72	0.87	1.41	1.62	1.76	1.87	2.02	2.06	2.15	2.09	2.08	1.95	1.86	1.72	1.50	0.93	0.81	1.30
65	1.05	0.65	1.00	1.40	1.58	1.75	1.89	2.05	2.10	2.21	2.14	2.10	1.97	1.84	1.69	1.49	1.07	0.79	1.17
70	0.90	0.72	1.10	1.32	1.53	1.72	1.89	2.05	2.13	2.22	2.16	2.10	1.97	1.82	1.64	1.40	1.17	0.85	1.05
75	0.76	0.81	1.03	1.22	1.46	1.68	1.89	2.04	2.14	2.21	2.16	2.09	1.97	1.77	1.57	1.32	1.10	0.88	0.92
80	0.62	0.70	0.92	1.12	1.39	1.63	1.87	2.03	2.14	2.20	2.16	2.07	1.93	1.72	1.49	1.22	0.99	0.76	0.79
85	0.49	0.59	0.81	1.03	1.31	1.58	1.82	2.00	2.12	2.18	2.15	2.04	1.89	1.66	1.42	1.13	0.89	0.64	0.66
90	0.38	0.48	0.71	0.95	1.24	1.52	1.78	1.96	2.09	2.14	2.10	2.00	1.84	1.60	1.35	1.05	0.81	0.57	0.52
95	0.35	0.47	0.69	0.93	1.22	1.49	1.75	1.93	2.06	2.12	2.09	1.97	1.82	1.58	1.34	1.04	0.80	0.57	0.46
100	0.35	0.46	0.68	0.91	1.19	1.46	1.71	1.89	2.01	2.07	2.04	1.93	1.78	1.55	1.31	1.03	0.79	0.57	0.39
105	0.35	0.46	0.67	0.88	1.15	1.41	1.66	1.82	1.94	2.00	1.97	1.87	1.73	1.51	1.28	1.00	0.79	0.57	0.35
110	0.35	0.45	0.64	0.84	1.10	1.35	1.58	1.74	1.87	1.91	1.89	1.79	1.66	1.45	1.23	0.98	0.78	0.57	0.34
115	0.35	0.45	0.63	0.81	1.05	1.27	1.50	1.65	1.77	1.81	1.80	1.70	1.58	1.38	1.19	0.95	0.76	0.56	0.33
120	0.35	0.43	0.60	0.76	0.98	1.19	1.40	1.54	1.66	1.70	1.70	1.60	1.49	1.31	1.13	0.91	0.74	0.55	0.32
125	0.34	0.41	0.57	0.71	0.91	1.09	1.29	1.42	1.54	1.58	1.58	1.49	1.39	1.22	1.06	0.86	0.72	0.55	0.32
130	0.33	0.40	0.54	0.66	0.84	1.00	1.17	1.29	1.41	1.44	1.44	1.36	1.27	1.13	0.99	0.82	0.69	0.53	0.31
135	0.32	0.37	0.50	0.61	0.77	0.91	1.06	1.16	1.27	1.29	1.30	1.24	1.17	1.04	0.93	0.77	0.66	0.51	0.30
140	0.32	0.36	0.47	0.56	0.70	0.81	0.94	1.03	1.12	1.15	1.16	1.10	1.05	0.93	0.86	0.72	0.62	0.49	0.29
145	0.30	0.34	0.43	0.50	0.63	0.71	0.83	0.90	0.98	0.99	1.01	0.97	0.93	0.84	0.79	0.67	0.59	0.48	0.28
150	0.29	0.31	0.40	0.46	0.56	0.63	0.73	0.78	0.84	0.86	0.88	0.85	0.83	0.76	0.72	0.62	0.56	0.46	0.28
155	0.28	0.29	0.38	0.41	0.49	0.54	0.63	0.66	0.73	0.74	0.77	0.74	0.74	0.68	0.65	0.57	0.53	0.44	0.28
160	0.27	0.28	0.34	0.37	0.43	0.47	0.53	0.57	0.62	0.64	0.66	0.66	0.64	0.62	0.58	0.54	0.49	0.44	0.28
165	0.00	0.00	0.00	0.00	0.00	0.00	0.00	0.00	0.00	0.00	0.00	0.00	0.00	0.00	0.00	0.00	0.00	0.00	0.00
170	0.00	0.00	0.00	0.00	0.00	0.00	0.00	0.00	0.00	0.00	0.00	0.00	0.00	0.00	0.00	0.00	0.00	0.00	0.00
175	0.00	0.00	0.00	0.00	0.00	0.00	0.00	0.00	0.00	0.00	0.00	0.00	0.00	0.00	0.00	0.00	0.00	0.00	0.00
180	0.00	0.00	0.00	0.00	0.00	0.00	0.00	0.00	0.00	0.00	0.00	0.00	0.00	0.00	0.00	0.00	0.00	0.00	0.00

C Range: 0 - 360DEG

C Interval: 10.0DEG

Test Speed: HIGH

Temperature:25.3°C

Operators:

Test Date:13 December 2022

γ Range: 0 - 160DEG

γ Interval: 2.5DEG

Test System:EVERFINE GO-2000A_V1 SYSTEM V2.00.456

Humidity:65.0%

Test Distance:6.265m [K=1.0000]

Remarks:

LUMINOUS DISTRIBUTION INTENSITY DATA

NAME: 99LPL094/WH	TYPE:	WEIGHT: 1
SPEC.:	DIM.: 300 x 110 x 25	SERIAL No.: 0
MFR.: Elmark Industries JSC	SUR.: rectangle	Shielding Angle:

Table--2

UNIT: cd

C (DEG) γ (DEG)	190	200	210	220	230	240	250	260	270	280	290	300	310	320	330	340	350		
0	2.00	2.00	2.00	2.00	2.00	2.00	2.00	2.00	2.00	2.00	2.00	2.00	2.00	2.00	2.00	2.00	2.00		
5	2.68	4.43	6.58	8.32	10.3	11.5	12.9	13.2	13.8	13.3	12.8	11.5	10.3	8.43	6.65	4.51	2.73		
10	4.68	8.97	13.6	17.5	21.8	24.8	27.7	28.8	29.7	28.7	27.4	24.5	21.5	17.4	13.4	8.85	4.55		
15	6.98	13.7	21.0	27.5	34.6	39.6	44.4	46.3	47.8	46.1	43.8	39.1	34.0	27.3	20.6	13.4	6.62		
20	9.29	18.6	28.9	38.3	48.3	55.6	62.3	65.1	67.1	64.7	61.4	54.7	47.4	37.8	28.2	18.0	8.70		
25	11.6	23.6	37.1	49.5	62.5	72.0	80.5	84.2	86.6	83.7	79.3	70.8	61.2	48.7	36.1	22.7	10.7		
30	13.8	28.7	45.4	60.8	76.6	87.9	98.5	103	106	102	97.0	86.4	75.0	59.6	44.0	27.4	12.7		
35	16.0	33.6	53.6	71.8	90.4	104	116	121	124	120	114	102	88.4	70.3	51.8	32.1	14.6		
40	18.0	38.5	61.5	82.3	103	118	132	138	142	137	130	116	101	80.6	59.4	36.5	16.4		
45	19.9	43.0	69.0	92.2	116	132	147	154	158	153	145	130	113	90.3	66.5	40.8	18.1		
50	21.7	47.3	75.9	101	127	145	162	168	173	167	159	142	124	99.1	73.1	44.8	19.6		
55	23.3	51.2	82.2	110	137	157	174	182	186	180	171	153	134	107	79.1	48.4	20.9		
60	24.6	54.6	87.7	117	146	167	185	194	199	192	182	163	142	114	84.4	51.5	22.1		
65	25.7	57.6	92.5	123	154	176	195	204	209	202	192	172	150	120	88.9	54.2	23.0		
70	26.6	60.0	96.4	128	160	183	203	213	218	211	200	179	156	125	92.7	56.4	23.7		
75	27.2	61.9	99.5	132	165	189	210	219	225	218	206	185	161	129	95.5	58.1	24.2		
80	27.6	63.1	102	135	168	193	214	224	230	223	211	189	164	132	97.6	59.3	24.5		
85	27.8	63.9	103	137	170	195	217	227	233	226	214	191	166	134	98.8	59.9	24.6		
90	27.7	63.9	103	137	171	196	218	228	234	227	214	192	167	134	99.0	60.0	24.4		
95	27.4	63.5	103	137	170	195	217	227	233	226	213	191	166	133	98.4	59.5	24.2		
100	26.9	62.4	101	135	168	193	214	224	230	223	211	189	164	132	96.9	58.6	23.7		
105	26.1	60.7	98.5	132	164	188	209	219	225	218	206	184	160	129	94.5	57.0	23.0		
110	24.8	58.5	95.1	127	159	183	203	212	218	211	199	179	155	124	91.2	54.8	22.0		
115	21.0	55.7	90.7	122	152	175	194	204	209	202	191	171	148	119	87.0	52.2	18.7		
120	17.5	51.3	85.6	115	144	166	184	193	198	192	181	162	140	113	82.1	48.0	15.0		
125	14.7	40.4	79.6	108	135	156	173	181	185	179	170	153	131	105	76.4	37.6	12.4		
130	12.3	30.3	71.5	99.1	124	144	159	167	171	166	157	141	121	96.7	68.8	26.9	10.3		
135	10.3	25.0	55.3	89.2	113	131	145	152	156	151	143	128	110	87.1	52.4	22.2	8.55		
140	8.51	23.3	43.9	73.5	99.6	116	129	136	139	135	127	114	97.1	72.6	37.0	20.4	7.00		
145	6.86	19.4	27.9	51.5	77.6	99.6	112	118	121	118	110	97.7	74.4	48.6	25.3	17.1	5.61		
150	5.39	12.9	27.2	26.9	48.4	67.7	83.6	95.5	98.4	94.8	81.9	64.7	43.8	23.4	25.4	11.2	4.39		
155	4.04	9.71	16.8	26.0	23.5	33.7	47.5	54.5	57.5	53.6	45.1	28.2	20.4	23.9	14.5	8.35	3.25		
160	2.80	6.64	10.6	14.0	21.2	25.0	24.6	25.7	26.1	25.0	23.7	22.5	17.8	11.9	8.78	5.55	2.18		
165	0.00	0.00	0.00	0.00	0.00	0.00	0.00	0.00	0.00	0.00	0.00	0.00	0.00	0.00	0.00	0.00	0.00		
170	0.00	0.00	0.00	0.00	0.00	0.00	0.00	0.00	0.00	0.00	0.00	0.00	0.00	0.00	0.00	0.00	0.00		
175	0.00	0.00	0.00	0.00	0.00	0.00	0.00	0.00	0.00	0.00	0.00	0.00	0.00	0.00	0.00	0.00	0.00		
180	0.00	0.00	0.00	0.00	0.00	0.00	0.00	0.00	0.00	0.00	0.00	0.00	0.00	0.00	0.00	0.00	0.00		

C Range: 0 - 360DEG

C Interval: 10.0DEG

Test Speed: HIGH

Temperature:25.3°C

Operators:

Test Date:13 December 2022

γ Range: 0 - 160DEG

γ Interval: 2.5DEG

Test System:EVERFINE GO-2000A_V1 SYSTEM V2.00.456

Humidity:65.0%

Test Distance:6.265m [K=1.0000]

Remarks: